

 **TACTIC**

# THE ART OF CUSTOM

2020/2021  
ENG



# OUR PROCESS

Everything we make at Tactic is KMO, produced in-house at our HQ in Girona with care and attention to detail.

The process begins with our customer service team who communicate with clients and the design team to create exactly the right design. Next, comes the simultaneous printing of the design onto transfer paper and the pattern-cutting.



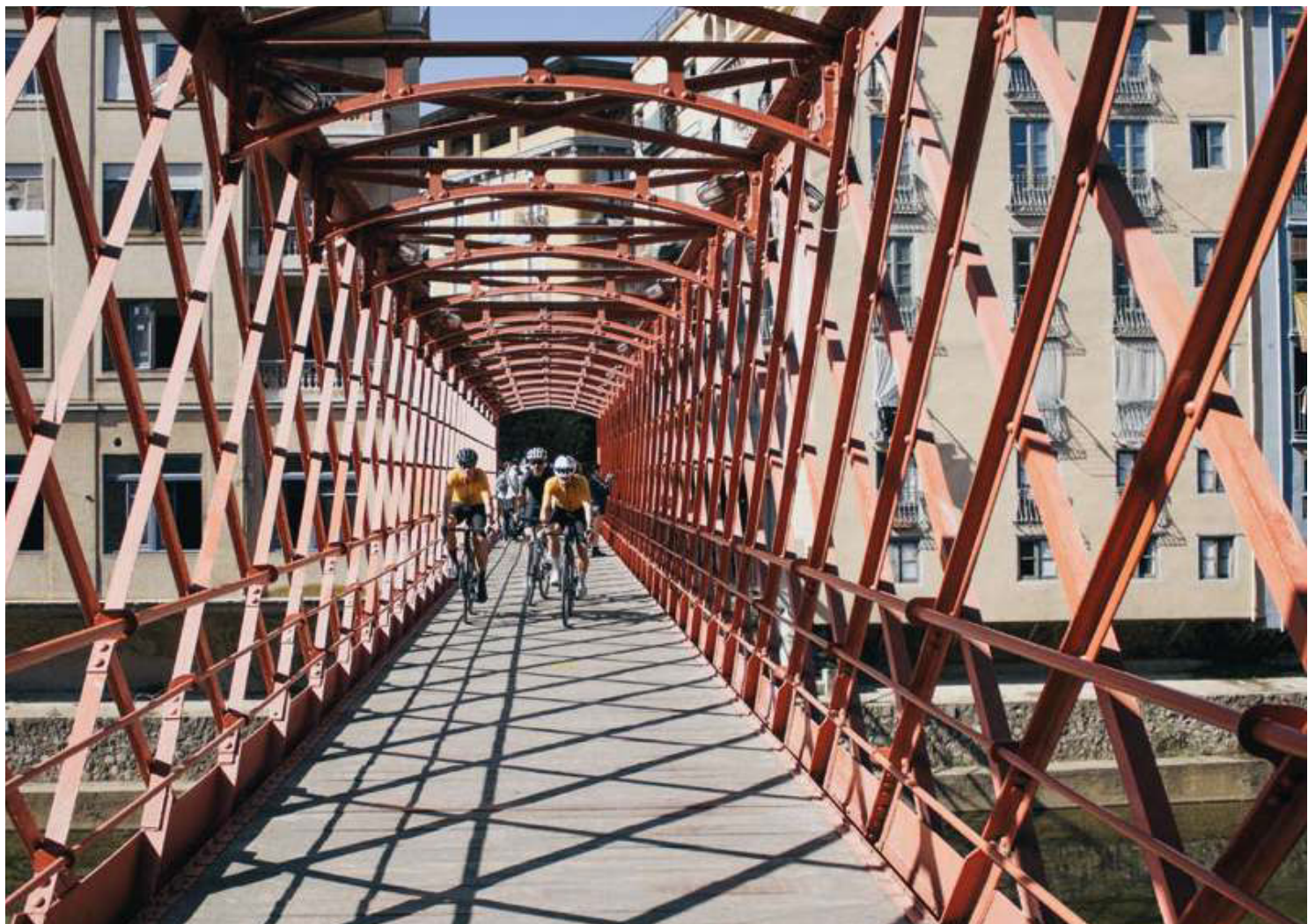


Once this is ready we use heat transfers to print the design onto the material, which is then sorted and sent to a local needleworkers to be sewn together. Once the clothing is returned to us it goes through rigorous quality-control before finally being packaged in 100% biodegradable bags and sent out to the customer.

# GIRONA, THE HOME OF CYCLING

Girona is our home, where we live, where we are from and where Tactic was born. We know it like the back of our hands and it is the Girona roads which inspire our designs. More than a city, Girona is a feeling, a community, a cycling mecca with over 100 professionals living in it and ten times the amount of cycling visitors.

Being in Girona allows us access to a vast community of athletes, both local and from all over the world, who can test our product and represent our brand. Girona is the beating heart of cycling and our fingers are right on the pulse.







# RESTLESS SPIRIT. CAN'T STOP, WON'T STOP.

It's not in our nature to stand still and admire the view behind us. We are never content with status quo, we understand the importance of constant evaluation and improvement and we are always moving forward.

That's why we decided, in 2015, to overhaul our warehouse to create a space that reflected our brand and our values and it's why we are constantly road-testing new materials and styles, constantly striving to improve our products so that you get the very best cycling clothing - made by cyclists, for cyclists.



# CYCLING SUMMER

NEW







# SUMMER / SUNNY DAY



# SUMMER / SUNNY DAY

MAN

WOMAN

NEW



**JERSEY SHORT SLEEVE - 1065**  
REAR POCKET - 1059  
KIDS - 1078

NEW



**JERSEY SHORT SLEEVE - 1066**  
REAR POCKET - 1050

NEW



**JERSEY SHORT SLEEVE**  
SET IN SLEEVE - 1063

NEW



**JERSEY SHORT SLEEVES**  
SET IN SLEEVE - 1067

NEW



**BIB SHORTS - 2043**  
STRAPLESS - 2031

NEW



**BIB SHORTS**  
STRAPLESS - 2007

# SUMMER / HARD DAY



# SUMMER / HARD DAY

MAN

WOMAN

NEW



JERSEY SHORT SLEEVE - 1044

NEW



JERSEY SHORT SLEEVE  
SET IN SLEEVE - 1046

NEW



JERSEY SHORT SLEEVE - 1048

NEW



JERSEY SHORT SLEEVE  
SET IN SLEEVE - 1047

NEW



BIB SHORTS - 2042

NEW



BIB SHORTS LINE - 2039

NEW



BIB SHORTS - 2041  
LINE - 2054

MAN



SKIN SUIT SHORT SLEEVE - 5001



SKIN SUIT LONG SLEEVE - 5003



SPEED SUIT SHORT SLEEVE  
REAR POCKET - 5006

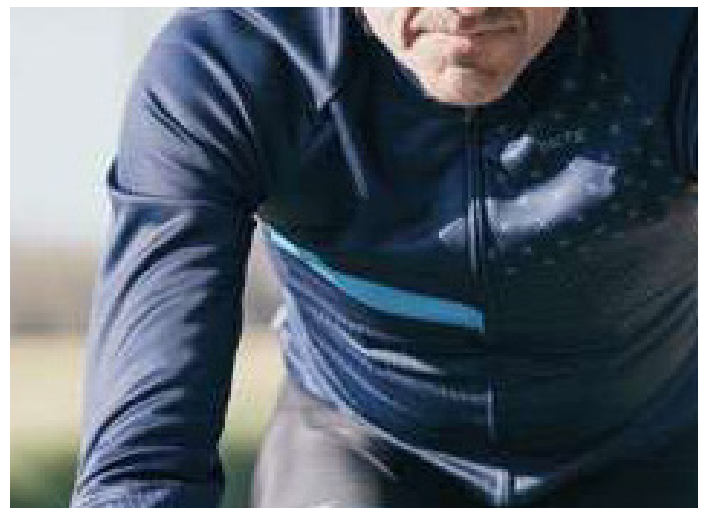
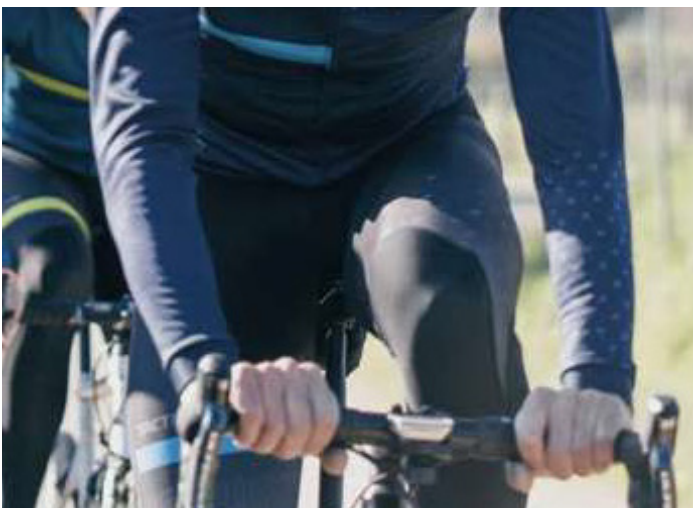
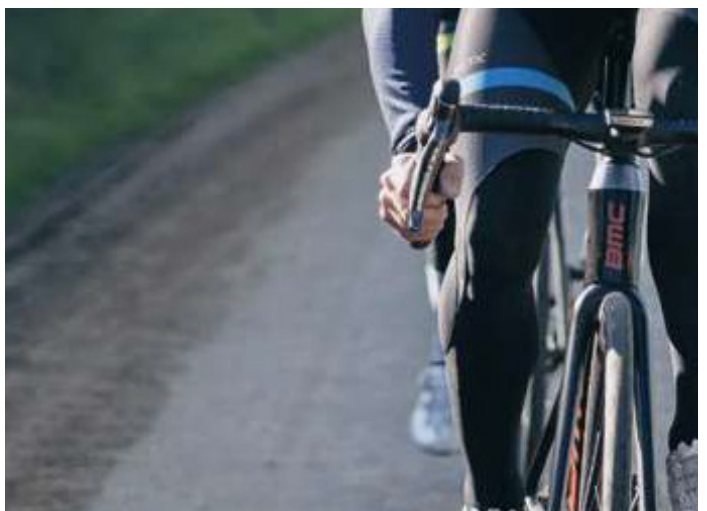


# CYCLING

## WINTER



# WINTER / SUNNY DAY





# WINTER / SUNNY DAY

MAN



**JERSEY LONG SLEEVE - 1028**  
REAR POCKET - 1016  
KIDS - 1033



**JACKET - 3005**  
FRONTAL MEMBRANE - 3004  
KIDS - 3008

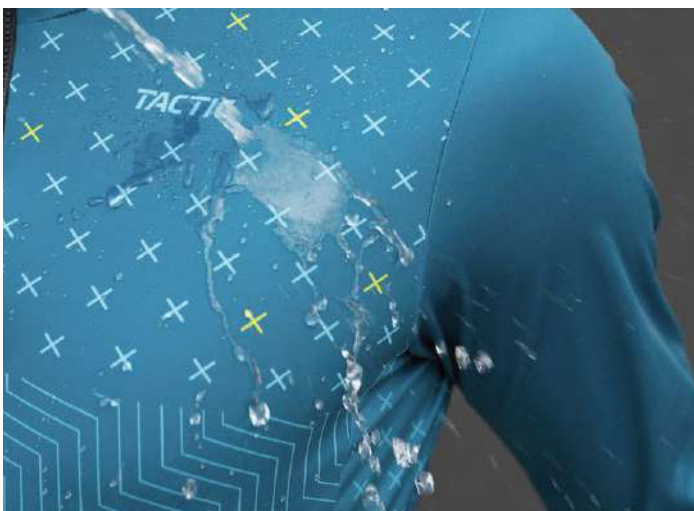


**BIB KNICKERS - 2023**  
FLEECE LYCRA - 2024



**BIB TIGHTS - 2011**  
WITHOUT HEELBAND - 2008  
KIDS - 2019

# WINTER / HARD DAY



# WINTER / HARD DAY

---

## MAN

---



**JERSEY LONG SLEEVE - 1018**  
FRONTAL MEMBRANE - 1034



**JACKET - 3003**  
FRONTAL MEMBRANE - 3002



**JACKET SHIELD - 3015**



**BIB TIGHTS - 2010**

---

## WOMAN

---



**JERSEY LONG SLEEVE - 1026**  
FRONTAL MEMBRANE - 1035



**JACKET - 3007**  
FRONTAL MEMBRANE - 3006



**BIB KNICKERS- 2021**  
FLEECE LYCRA - 2022



**BIB TIGHTS - 2012**  
WITHOUT HEELBAND  
- 2013

A photograph of a stone archway in a rustic building. The arch is made of light-colored stone or plaster. Above the arch, a tiled roof is visible. A string of laundry, including a dark blue and white striped garment, hangs across the foreground. The background shows a textured wall and a window with dark shutters. The overall scene is brightly lit, suggesting a sunny day.

# CYCLING ACCESSORIES



# ACCESSORIES



# ACCESSORIES

NEW



WINDBREAKER VEST - 4029

NEW



WINDBREAKER JACKET - 4025



RAIN JACKET - 4021



BASELAYER SHIRT - 4019



LEG WARMERS - 4028  
FLEECE LYCRA - 4017



ARM WARMERS - 4024  
FLEECE LYCRA - 4016



UNDERHELMET CAP - 4010



NECK WARMER - 990



GLOVES - 965



PRINTABLE SOCKS - 976



SENSURA SOCKS - 973

# CYCLING

MTB





# MTB

---

UNISEX

---



**MTB SHIRT**  
LONG SLEEVE - 4005



**MTB SHIRT**  
SHORT SLEEVE - 4003



**BAGGY SHORTS - 2018**

# BADANAS

---

MAN

---



**KING**

**ULTRA**

MORE THAN 7 HOURS



**PRINCE**

**ULTRA**

MORE THAN 7 HOURS



**DUKE**

**RACE**

UP TO 6 HOURS



**COUNT**

**SPRINT**

3-5 HOURS

---

WOMAN

---



**QUEEN**

**ULTRA**

MORE THAN 7 HOURS



**MARQUISE**

**RACE**

UP TO 6 HOURS

# THE ART OF CUSTOM







CYCLING APPAREL MADE IN GIRONA

[www.tactic-sport.com](http://www.tactic-sport.com)

